

Pedestrian access changes



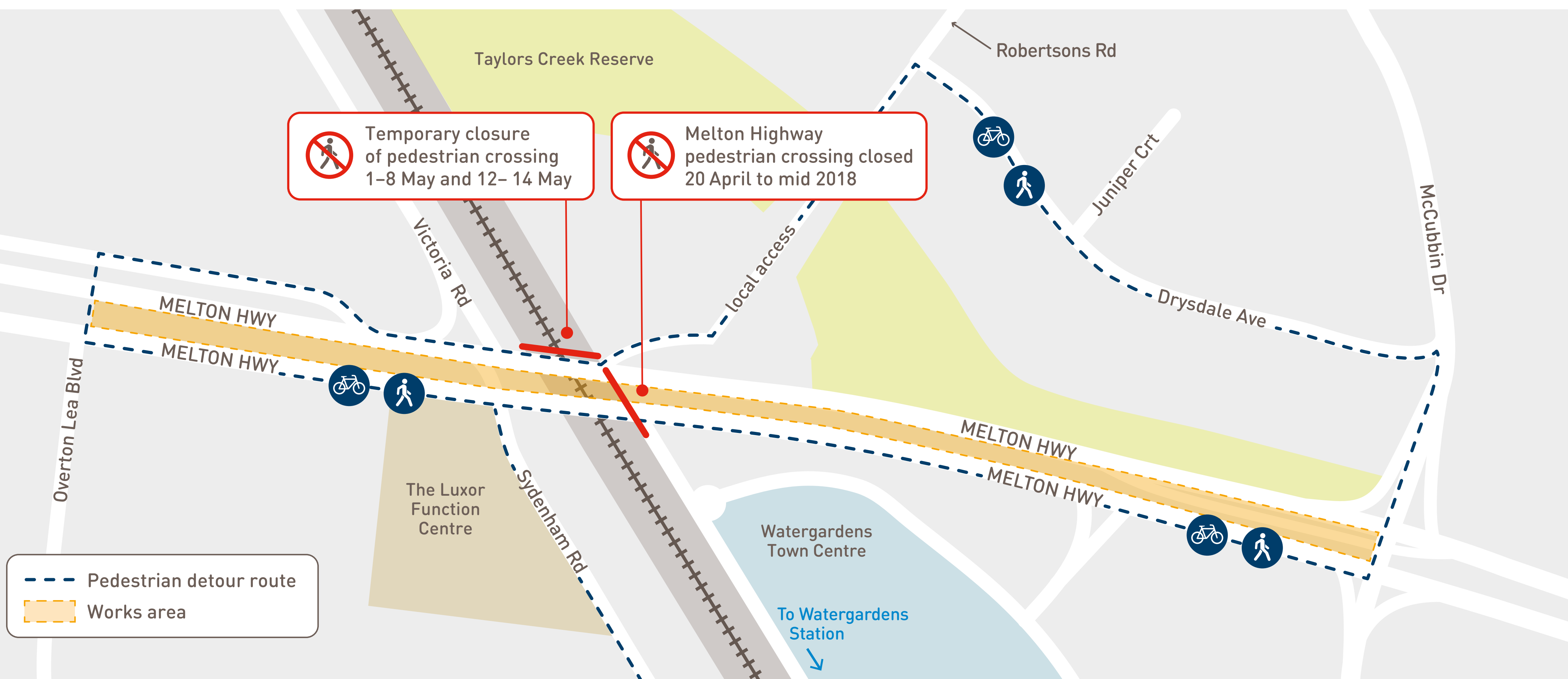
From 20 April 2017

The Melton Highway level crossing removal project will remove the level crossing by elevating the road over the railway line. It will provide safe pedestrian and cyclist routes along, beside and under the new bridge.

To make way for construction, the pedestrian crossing from the Old Sydenham Station across Melton Highway near the railway line will be closed until mid-2018. Pedestrian detours will be in place.

From 1–8 May and 12–14 May 2017, the pedestrian crossing over the railway line on the north side of Melton Highway will be closed. Pedestrians will still be able to cross the railway tracks safely on the south side.

For your safety, please follow detour signs and cross Melton Highway at the signalised intersections at McCubbin Drive or Overton Lea Boulevard.



levelcrossings.vic.gov.au

1800 762 667

Follow us on social media

Authorised and published by the Victorian Government, 1 Treasury Place, Melbourne

